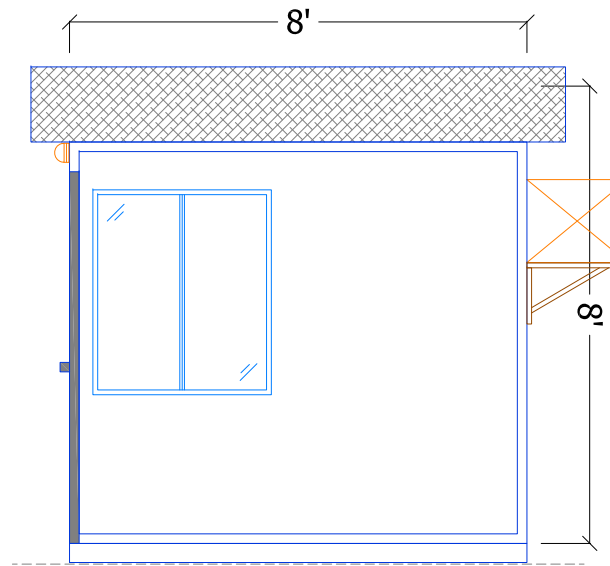
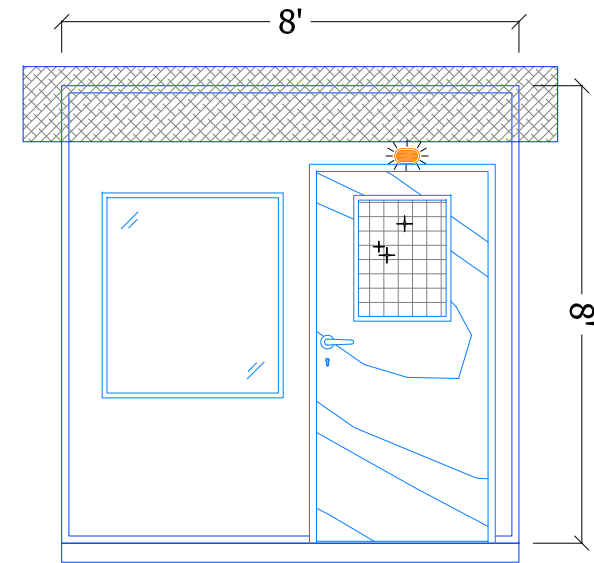


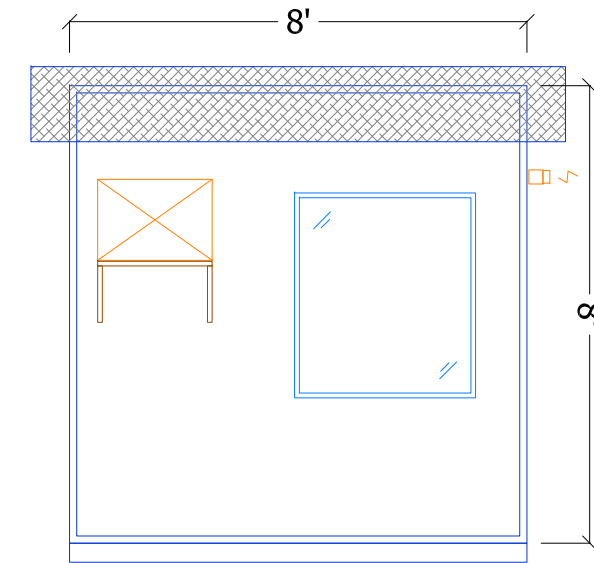
Floor Plan.....



Side Elevation.....



Front Elevation.....



Rare Elevation.....

Doors / Window	
D1	210cm x 90cm Flush Doors, 40mm semi-solid, stained teak veneer finish with Meranti lipping & door frame fitted with 3 brass hinges, 45x60cm view pane, lever handles, rubber door stop & 'Solex' lock with 3 keys
W1	90cmW x 105cmH aluminium framed double glazed fixed reflective glass window with weather seals
W2	90cmW x 105cmH aluminium framed double glazed reflective glass sliding window with weather seals
W3	120cmW x 100cmH aluminium framed double glazed reflective glass sliding window with weather seals
Fittings & Equipments	
1ea. 1.5-Tons/18000 Btu-hr. Aircond. window unit 'Carrier'	

LEGEND	
	Single, Double Gang Switches
	13A Double Switched Socket
	13A Single Switched Socket
	15A Single Switched Socket
	Telecommunication Point
	Bulkhead Light IP54
	2x36W Double Fluorescent Light Fixture
	Distribution Panel
	Window Air-Conditioner Unit
	32Amps Single Phase Plug-In Socket for Power Connection

CONTRACTOR:

MODEST COMPANY

P.O.BOX : 5741
DUBAI, U.A.E
JEBEL ALI Free Zone

TEL: 04-8814786
FAX: 04-8812786



CLIENT :

Project Title:

8' x 8' Portable Security Cabin - Standard Type

Drawing Name:

Floor Plan + Elevations

Date:

17-07-11

Size:

A4

Original Scale:

n.t.s.

Designed:

mhz.

Drawing No:

PO166

Revision:

